

FAMILY LINKS



The Stables
Bishopgate St
Singleton 2330
Ph: 6572 3810



4 KearsleySt
Aberdare 2325
Ph: 4990 7402

Coordination Unit Office Hours: 9 - 3 Mon to Fri



&
In Home Child Care

October 2011

Calendar Dates to Remember

October

13th Bob Turner @ Cessnock 9.30

22nd – 31st Children's Week

26th Service Meeting @ Greta workers club 7pm All families are invited to attend.

November

23rd Singleton Christmas Disco – Club Singleton 6 – 8pm

December

3rd Sydney Shopping Trip: Proceeds to Relay For Life

7th Cessnock Disco – Cessnock Ex Services Club 6 – 8pm

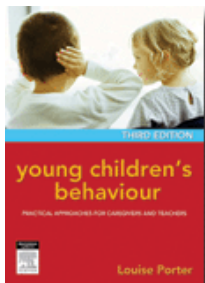


A sad 'farewell' to Sally one of our great IHCC educators who is heading off overseas to further her education. Sally has been a great asset to our service and has assisted a number of families. We are very happy that she plans to stay in the Early Childhood Industry.



Did your child's educator attend Louise Porter's Workshop?

How amazingly lucky we were to have renowned author, psychologist, and international presenter, Louise Porter attend our annual Educator Conference.



Louise has taught at university, conducted a private practice for 30 years, and worked in both mainstream and disability agencies and schools. She is an author and has spoken extensively throughout Australia and internationally.



"I am passionate about safeguarding children's self-esteem, promoting their social skills, and supporting their resilience in the face of the challenges that life often raises, and to teach them to behave considerately, being mindful of how their behaviour affects others, rather than what consequences it may earn them."

Louise Porter, PhD, MA(Hons), MGiftedEd, DipEd, BA, BIntStuds Child Psychologist

The Early Years Learning Framework In Practice

'Belonging, Being and Becoming ensures all children achieve positive outcomes'

Children are confident and involved learners

When children are able to experiment, explore, problem solve and try new ideas they develop a natural curiosity and disposition towards wanting to learn more about their world

Educators can encourage children by:



- providing environments that are flexible, where children feel confident to challenge themselves to explore, experiment & take appropriate risks
- recognising and valuing children's curiosity and involvement in learning and explorative play
- listening carefully to children's ideas and discussing/ extending on their thinking
- reflecting with children about what they have learned & build on their understandings
- joining in with children's reasoning, predicting and reflecting processes
- providing sensory experiences with natural & processed materials

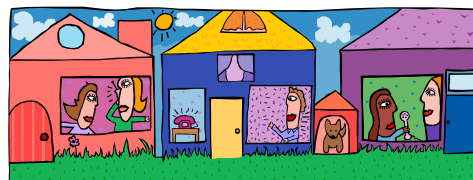
The Early Years Learning Framework Principles

will guide the Family Day Care or In Home Child Care Service you are using

A vital principle is..... Partnerships

Parents are children's first and most enduring educators. Over 70% of children's lives are spent, not in a centre or care environment but with their family and the wider community.

The importance of partnerships with parents is essential if both parents and children are to feel safe, respected and welcome. Partnerships also allow for positive transitions for children as they move between one setting and another.



**WELCOME TO
DONREVE**

**Our new admin assistant. Let's all
make her feel comfortable and a
part of our FDC and IHCC service.**



SERVICE MEETING

Our next service meeting will be held at Greta Workers Club on the 26th of October at 7pm. We will be presenting service awards at this meeting so come along and support your educators who have achieved their service milestones of 1,5,10 and 15 years this year.



CONGRATULATIONS



To Bec from IHCC on the safe arrival of Oliver James on the 14th of August

Cherie's Green Spot

If you change all of your light bulbs over to energy efficient compact fluorescent lamps you will use 70% less energy and save over \$50 per year. If we all do this it's the equivalent of removing 1000,000 cars from the road.



It's that time again..... 2012 Re Enrolment

Yes it is that time again already. You will be receiving your 2012 re-enrolment forms with your usage statements for this quarter. These should be sent by mid-October.

- All families wishing to continue to use care in 2012 will need to complete and return a form.
- There is no charge to re-enrol, it provides us with the opportunity to check and update any changes to family details.
- These forms need to be returned by January 31st or families will be treated as a new enrolment and the \$30 enrolment fee will apply.

WHAT'S HAPPENING WITH OUR FRIENDS AT KOE-NARA



Power of Positive Parenting
October 18, 1pm—3pm

Confident, Competent Children

October 25, 1 pm—3 pm
Child Minding available, bookings are essential, as numbers are limited

Koe-nara,

Schools as Community Centre
Corner of Rawson & Quarrybylong Sts
Cessnock NSW 2325
T: 49909354 M: 0428 263 854

E: Jane.Hodgson@det.nsw.edu.au

Fruit & Veg Co-operative

Basket—\$30 each

Free Range Eggs \$3.20 a dozen

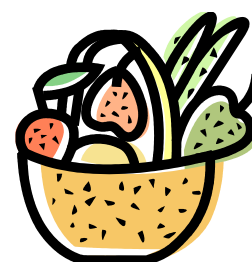
Available fortnightly

Payments due on Friday prior to delivery

Commencing 17.10.2011

Call in for more details

Please supply your own basket



BUT I AM ELIGIBLE FOR 50 HOURS – ELIGIBILITY AND CCB EXPLAINED

I am eligible for 50 hours of CCB, so why don't I get that in Family Day Care & In Home Child Care?

This is a common question we receive from parents, with a bit of a tricky answer. Simply, you do get the 50 hours of CCB, as this is a threshold or ceiling for the maximum amount of CCB an approved family can receive in any one week during standard hours. However, because FDC and IHCC are classified as part time services, our CCB is calculated at 1 1/3 times the normal rate. This means that in FDC and IHCC the CCB threshold is reached at 37.5 hours instead of 50.

This means you are still getting your correct CCB entitlement, just at an earlier point in time than in a centre.

If you have any further questions regarding this, contact Centrelink or the Family Assistance Office on **13 61 50**



DID YOU KNOW?

2012 is The National Year of Reading



Strawberries are the only fruit that have their seeds on the outside



If you can see a rainbow then you must have your back to the sun

Babies are born without kneecaps. They don't appear until the child reaches 2 to 6 years of age.



Barbie's full name is Barbara Millicent Roberts.

Apples, not caffeine, are more efficient at waking you up in the morning.



INFORMATIVE WEBSITES



If you are interested in literacy and it's importance to the under 5's, this is an informative yet practical site www.earlyword.com.au with a great section for Aboriginal children.

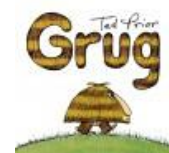
Response



The social and emotional wellbeing of children is vital if their needs are to be met and this site provides some excellent fact sheets that cover a variety of issues that can affect this developmental domain.
www.responsibility.com.au



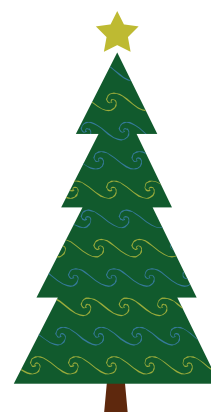
Find a variety of suitable books, listen to author interviews, join a forum, stay up to date on new products.
www.thelittlebigbookclub.com.au



Educator and Family Equipment Orders

Did you know you can get much of your Christmas shopping done without the hassle of going to the shops?

Not only can you purchase a wide range of quality toys and gifts from our educational suppliers but you can also assist in the services fundraising as we receive credits to then purchase equipment and materials for the toy library and Playsession.



How to order

1. Choose items from catalogues/s
2. Fill in the relevant order form/s. The school is Samaritans Family Day Care
3. Full payment must accompany all orders; cheque (payable to the appropriate supplier), money order or completed credit card details – sorry **no cash payments** will be accepted
4. Order forms and payment can be returned to the Coordination Unit or directly to the individual supplier
5. Items will be returned to the Coordination Unit or to your nominated address (additional postage may be charged for individual deliveries)
6. If you nominate to have your order returned to the Coordination Unit you will be contacted by phone to collect your orders when it arrive

For Christmas orders please send in by the end of October to ensure the items are returned by December.



A reminder..... Clear your Calendar for the end of year Christmas Disco



Wednesday 23rd November at Club Singleton 6 – 8pm

Wednesday 7th December at Cessnock RSC 6 – 8pm

The Coordination Unit Staff

Janine Voigt - Authorised Supervisor
Karen Lewis - IHC & FDC Child Care Coordinator
Sandy Hart - Child Care Coordinator
Kylie Ledger - Administration Manager



Cherie Pauling - Placements and Support Officer
Melanie Howlett - Child Care Coordinator
Donreve Miles - Administration Assistant
Maddison Andrews - Administration Assistant

Samaritans would like to acknowledge the traditional custodians of this land and pay our respects to the Elders past, present and future for they hold the memories, the traditions, the culture and hopes of Aboriginal Australia.